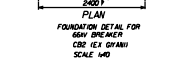
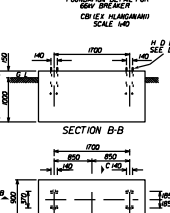
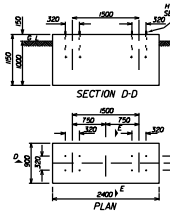
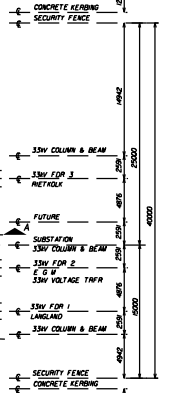
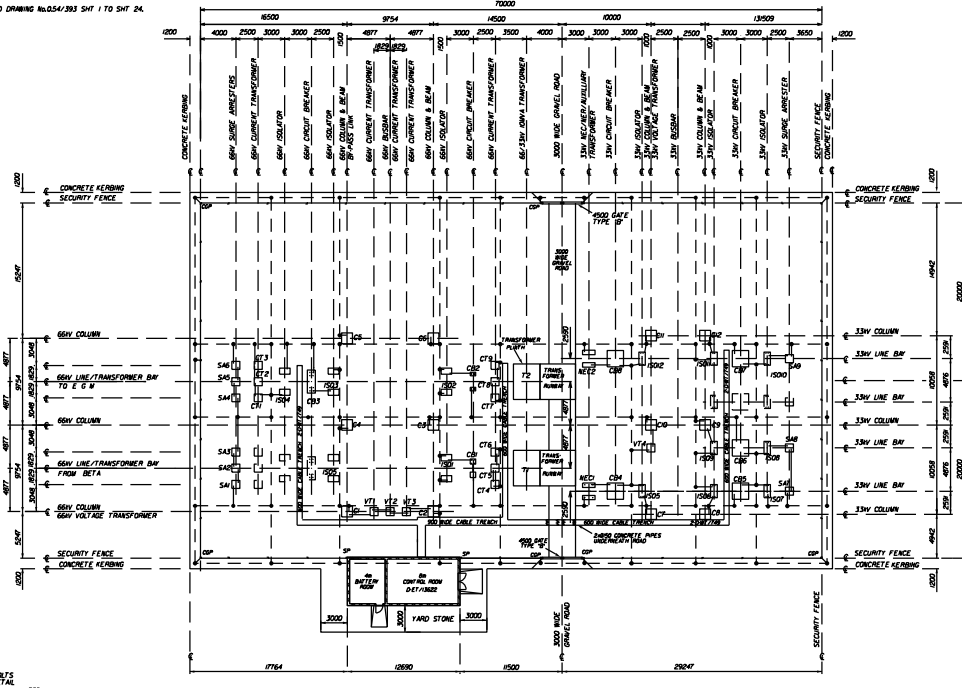


FENCING SCHEDULE			
DESCRIPTION	QTY	ONG. No.	
INTERMEDIATE POSTS	38	054/394	
CORNER POSTS	4	10	
STAIN POSTS	2	054/397	
GATE POSTS	4	047/146	
GATE TYPE 'B'	2		

- NOTES:
1. SITE TO BE GRADED 1:200 FOR WATER DRAINAGE.
 2. YARD SURFACE TO BE COVERED 100mm DEEP WITH 25mm GRADE STONE.
 3. SEE 054/390 FOR Y YARD CIVIL WORKS.
 4. REFER TO EARTHING STANDARD DRAWING NO.054/393 SH1 TO SH1 24.

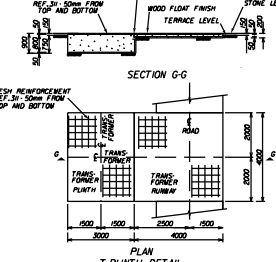
FOUNDATION AND STEELWORK SCHEDULE (33kV)					
ITEM	MARK	DESCRIPTION	FOUNDATION	SUPPORT MARK	QTY
CE100	CE	33kV COLUMN	054/392	054/393 SH1	6
BE	BE	33kV BEAM 10000		054/393 SH1	3
EP	EP	33kV BEAM 10000		054/393 SH1	4
ET100	ET	33kV EARTHING SUPPORT		054/393 SH1	6
MEC100	MEC	33kV MECH/EARTHING TRANSFORMER	054/399	054/393 SH1	2
CT100	CT	33kV ISOLATOR	054/404	054/403	8
CB100	CB	33kV CIRCUIT BREAKER (GEC)	054/1799	WITH CB	5
VT4	VT	33kV VOLTAGE TRANSFORMER	054/300	054/300 SH1	2
SAF500	SAF	33kV SURGE ARRESTER	054/3739	054/3778	3

FOUNDATION AND STEELWORK SCHEDULE (66KV)					
ITEM	MARK	DESCRIPTION	FOUNDATION	SUPPORT/BEAM	QTY
C100	66/C100	66KV COLUMN CDS	054/329	054/329, 328	6
BE100	66/BE100	66KV BEAM	054/329	054/329, 328	6
C100	66/C100	66KV ISOLATOR	054/329	054/329, 328	6
ISD-2500		66KV ISOLATOR	054/401	054/400	9
CT100		66KV CURRENT TRANSFORMER			3
SAF-500		66KV SURGE ARRESTER	054/308	054/302, 306	3
VT100		66KV VOLTAGE TRANSFORMER			1
CB100		66KV CIRCUIT BREAKER (GEC)	DETAIL CB08		1
CB200		66KV CIRCUIT BREAKER (GEC HUNGARIAN)	DETAIL CB07		1
CB300		66KV CIRCUIT BREAKER (GEC)	054/426	054/435	1
VT100		66KV VOLTAGE TRANSFORMER	P-UNIT DETAIL		2
ISD200		66KV ISOLATOR, MOUNTED ON 66KV BEAM			



- FOUNDATION NOTES:
1. CONCRETE MIX TO BE IN ACCORDANCE WITH SABS 1000 SPECS.
 2. CONCRETE MIX TO GRADE 20/25.
 3. DEPTH OF FOUNDATION TO BE INCREASED AND/OR REINFORCEMENT ADDED IF SITE CONDITIONS MAKE THIS NECESSARY.
 4. ALL TOP EDGES OF CONCRETE ABOVE G.L. TO HAVE 25mm CHAMFER AT 45°.
 5. GROUT REQUIRED UNDER BASE PLATE ONLY.
 6. H D BOLTS COMPLETE WITH NUTS AND WASHERS TO BE SUPPLIED BY CIVIL CONTRACTOR.
 7. ALL H D BOLTS AND NUTS TO CONFORM TO SABS 335 STRENGTH GRADE 4.6.
 8. STEEL TEMPLATE TO BE USED FOR SETTING H D BOLTS.
 9. FOUNDATION TO UPPER SIDES OF FOUNDATION TO EXTEND TO AT LEAST 100mm BELOW GROUND LEVEL.
 10. ALL WELDING AND WELDING SYMBOLS SHALL CONFORM TO SABS 044 PART 1 TO PART 5.

- TRANSFORMER PLINTH NOTES:
1. GROUND UNDER PLINTH AND RUNNER TO BE COMPACTED TO 95% MOD. AASHTO.
 2. TRANSFORMER PLINTH TO BE TAKEN DOWN AT LEAST 250mm BELOW NATURAL GROUND LEVEL IN 1:4 IS CONCRETE.
 3. ALL CONCRETE TO 200MPa EXCEPT WHERE OTHERWISE STATED.



PROJECT INFORMATION			
PROJECT NO.	66/33kV SUBSTATION	PROJECT NAME	66/33kV SUBSTATION
CLIENT	ESKOM	DESIGNER	ESKOM
DATE	2004/07/26	REVISION	2-DWT/786
SCALE	1:500	BY	2